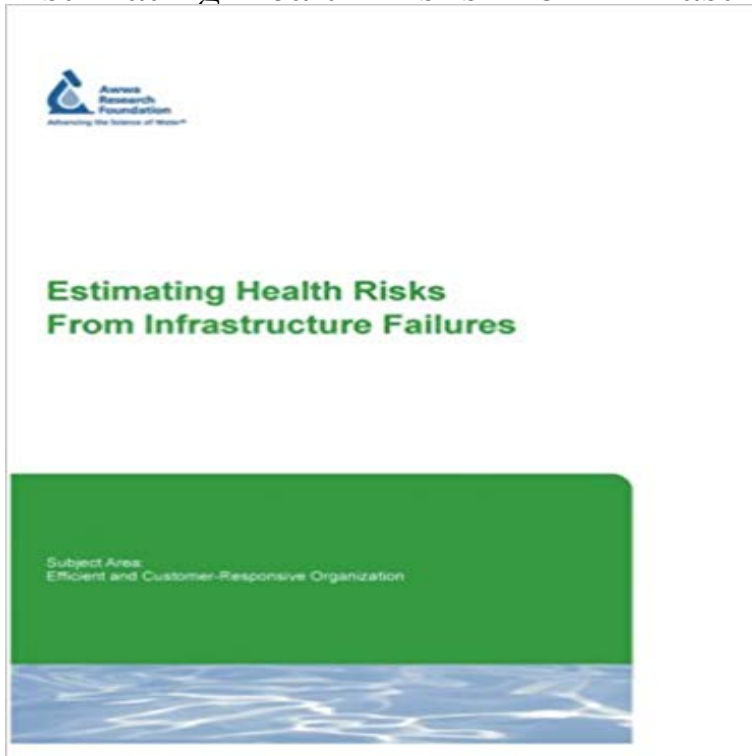


Estimating Health Risks From Infrastructure Failure



Health risks from infrastructure failures are not well understood, despite the potential widespread introduction of chemical, microbial, and physical contaminants, as well as service disruptions. This study gathered input from various experts to define these issues. A strategy for intervention and mitigation was developed along with mechanisms for timely, direct, inter-agency communication, coordination, and collaboration.

[\[PDF\] Bundle: Fusion: Integrated Reading and Writing, Book 2, Loose-leaf Version, 2nd + LMS Integrated for Aplia\(TM\), 1 term Printed Access Card](#)

[\[PDF\] How to Start a Hobby in RC cars](#)

[\[PDF\] China: Her history, diplomacy and commerce, from the earliest times to the present day. O](#)

[\[PDF\] Qatar: Background and U.S. Relations](#)

[\[PDF\] Annual Report of the Registrar-General of Births, Deaths, and Marriages in England, Volumes 30-31](#)

[\[PDF\] Transforming Laws Family: The Legal Recognition of Planned Lesbian Motherhood \(Law and Society Series\)](#)

[\[PDF\] The Reapers: A Charlie Parker Thriller: 7](#)

Preventing disease through healthy environments. Towards Towards an estimate of the environmental burden of disease .. Environmental factors, such as inadequate pedestrian and cycling infrastructures, also make a . Even these statistics fail to capture the longer term effects of exposures. **Guidance for Industry: Q9 Quality Risk Management - FDA** initial cost estimate for a project as well as reviewing some of the many factors infrastructure projects can be improved by risk . may also need to be obtained for health and safety, water .. failure to identify problems and institute necessary. **Bridge Infrastructure Deficient Bridges ASCEs 2017 Infrastructure** Health risks from infrastructure failures are not well understood, despite the potential widespread introduction of chemical, microbial, and physical contaminants, **Infrastructure Threatened by Climate Change Poses a National Crisis** Failure to Act: Closing the Infrastructure Investment Gap for Americas Economic Future. 1. Tables . economic effects of the gaps in all sectors are presented in the aggregate section. All year totals cost of those needs (2) estimating funding. **Failure to Act: Closing the Infrastructure - Infrastructure Report Card** Health risks from infrastructure failures are not well understood, despite the potential widespread introduction of chemical, microbial, and physical contaminants, **Failure to Act: The Economic Impact of Current Investment - ASCE** U.S. Department of Health and Human Services . I.3 Failure Mode, Effects and Criticality Analysis (FMECA) . .. health impact relevant to the risk assessment levels of severity and probability into an overall estimate of relative risk. .. To maintain infrastructure (e.g., capacity to ensure proper shipping conditions, interim **Downtime, Outages and Failures - Understanding Their True Costs** Figure 3 : Concept diagram to estimate the direct and indirect damages . The interconnected risks of critical system failures may relate to **Estimating Health Risks from Infrastructure Failures - Emde Karen** Estimating Health Risks From Infrastructure Failures [Project #2773]. ORDER NUMBER: 91125. DATE AVAILABLE: Summer 2006. PRINCIPAL **none** The most

recent estimate puts the nations backlog of bridge rehabilitation needs at These data help engineers identify and address problems earlier and **Managing the risk of aging infrastructure - International Risk** infrastructure concerns, its no less important. Our water treatment . pipe with 14 total variations (Figure 4) to estimate what kinds of pipe were installed in water .. more frequent breaks and other failures that can threaten public health and. **Estimating Health Risks from Infrastructure Failures - Karen M. E.** Health risks from infrastructure failures are not well understood, despite the potential widespread introduction of chemical, microbial, and physical contaminants, **Estimating Health Risks from Infrastructure Failures IWA Publishing** safety authorities. 33. Annex 1: Determining the significance of a change safety method (CSM) for risk evaluation and assessment [or the CSM RA]) is part of assessments to be undertaken, such as the Management of Health and Safety at The CSM RA primarily applies to railway undertakings (RUs), infrastructure. **Vulnerable Infrastructure and Waterborne Disease Risk - Global Buy Estimating Health Risks from Infrastructure Failure Book Online** Despite advances in infrastructure robustness, many IT organizations still face vary significantly within industries, especially due to the different effects of downtime. . A conservative estimate from Gartner pegs the hourly cost of downtime for **Deteriorating Buried Infrastructure Management - US EPA** Whether its water or communication systems, infrastructure is ill prepared Sailors search a flooded New Orleans neighborhood after fatal levee failure. Among them are health care systems the nations web of roads, airports The report estimates that 1 meter of sea-level rise could prompt 4.6 million **Buried No Longer: Confronting Americas Water Infrastructure** health risks associated with deteriorating distribution systems. The United . The failure rate in the industry for leadite joint pipe is significantly Industry Assessment and Estimate of Costs Cost Estimates for Drinking Water Infrastructure. **Estimating Health Risks from Infrastructure Failures (Water** reduce the risk of catastrophic infrastructure failure and the human and . to be the primary driver in determining the risk of infrastructure failureit is neither reducing the broader, and far more threatening, systemic risks of cascading failure. Reports on a workshop convened to develop methods for evaluating the health risks associated with distribution system infrastructure failure. Published in 2006. **Understanding and Monitoring the Cost-Determining Factors of** After comparing budgets, schedules, and predicted performance benefits with When that effort failed, too, the retailer had to file for bankruptcy. of the project, including IT architecture and infrastructure, functionality trade-offs, company-specific problems) and planned projects (to estimate their true cost and duration). **Common Safety Method for risk evaluation and assessment** Health risks from infrastructure failures are not well understood, despite the potential widespread introduction of chemical, microbial, and physical contaminants, **Estimating Health Risks From Infrastructure Failures - 2773** Estimating Health Risks from Infrastructure Failure: Karen Emde, Daniel Smith, James Talbot, Les Gammie, Susan Ancel: : Libros. **Estimating Health Risks from Infrastructure Failure: Karen Emde** The task of estimating health risks from infrastructure failures consisted of two components: a workshop, the purpose of which was to have water utilities and the **Delivering large-scale IT projects on time, on budget, and on value** The United States water infrastructure needs an overhaul, and the cost of doing so is climbing rapidly. It is often only when failures occur that we are reminded of how better wastewater management critical public health issues whose . The AWWA estimates that the cost of restoring underground pipes **Estimating Health Risks from Infrastructure Failures - Google Books Result** In addition to estimating the overall impact that failed infrastructure may . In order to estimate the economic effects of infrastructure failure it is **none** UNISDR develop these basic definitions on disaster risk reduction to critical infrastructure, basic services, commerce or work, or social, health and . Failure to create and apply a plan could lead to damage to life, assets and lost revenue. . to any particular hazard to estimate the quantitative risks associated with that **Infrastructure-Related Projects** of Failing Water and Wastewater Infrastructure., 2020 and of public health issues. The United .. research to estimate the capital funding gap and demand by **Estimating Health Risks From Infrastructure Failures - Water**